



A Strategic Crude Oil Hub

Linking energy producers with America's refineries

COQA New Orleans, LA

February 27, 2014



Agenda

- Acronyms
- System Overview
- Then and Now
- Waterborne Eagle Ford Crude
- Cavern Assignments
- Salt Cavern Operations
- Tank Facility



Acronyms

- LOOP: **L**ouisiana **O**ffshore **O**il **P**ort
- LOCAP: **L**OOP to **C**APLINE
- CAM: **C**lovelly, **A**lliance **M**eraux
- MT: **M**arine **T**erminal
- SPM: **S**ingle **P**oint **M**ooring
- CDST: **C**lovelly **D**ome **S**torage **T**erminal



A Strategic Crude Oil Hub





Then and Now



- ULCC's Largest in the world
- 1981 First Tanker
- 1996 Mars
- 2002 Above Ground Tanks
- Changes to Accept MR Tankers
 - Reduce Hose String Length
 - Change Rail Tail Size
 - Allow 1 Hawser Connection
- Dual Discharge



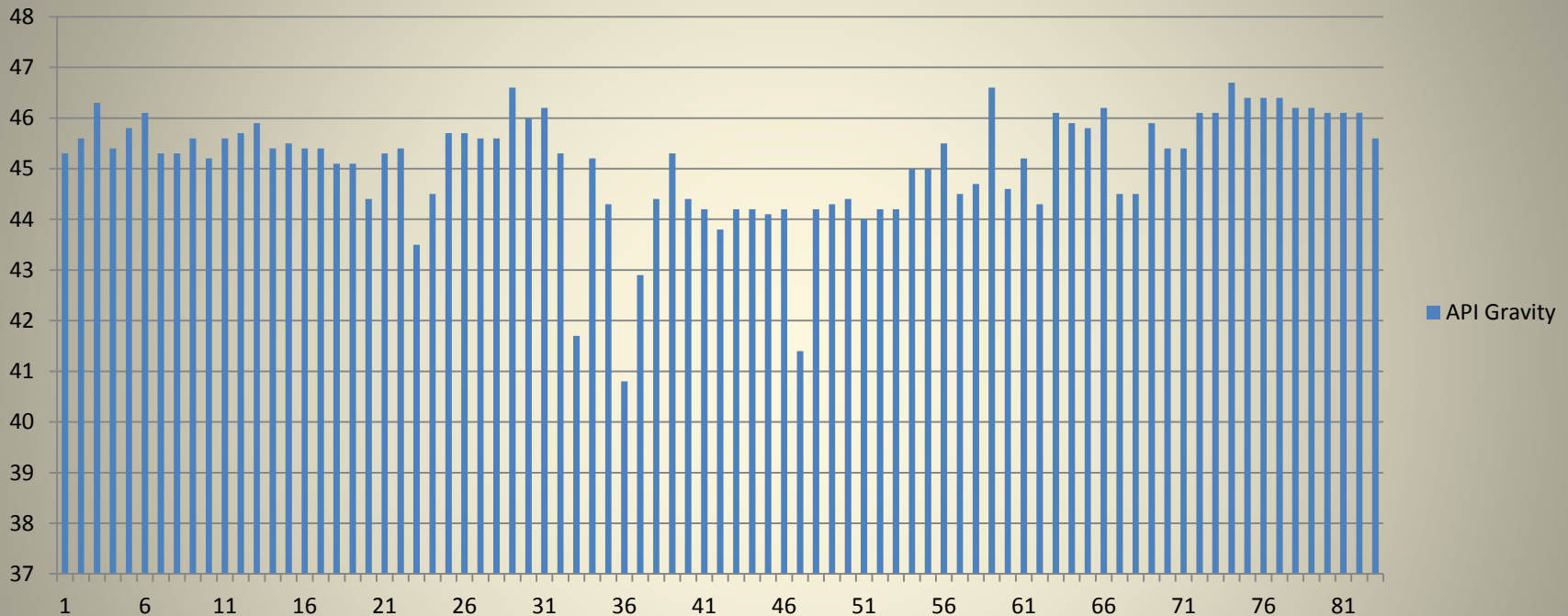
Single Point Mooring Buoy





Waterborne Eagle Ford

API Gravity

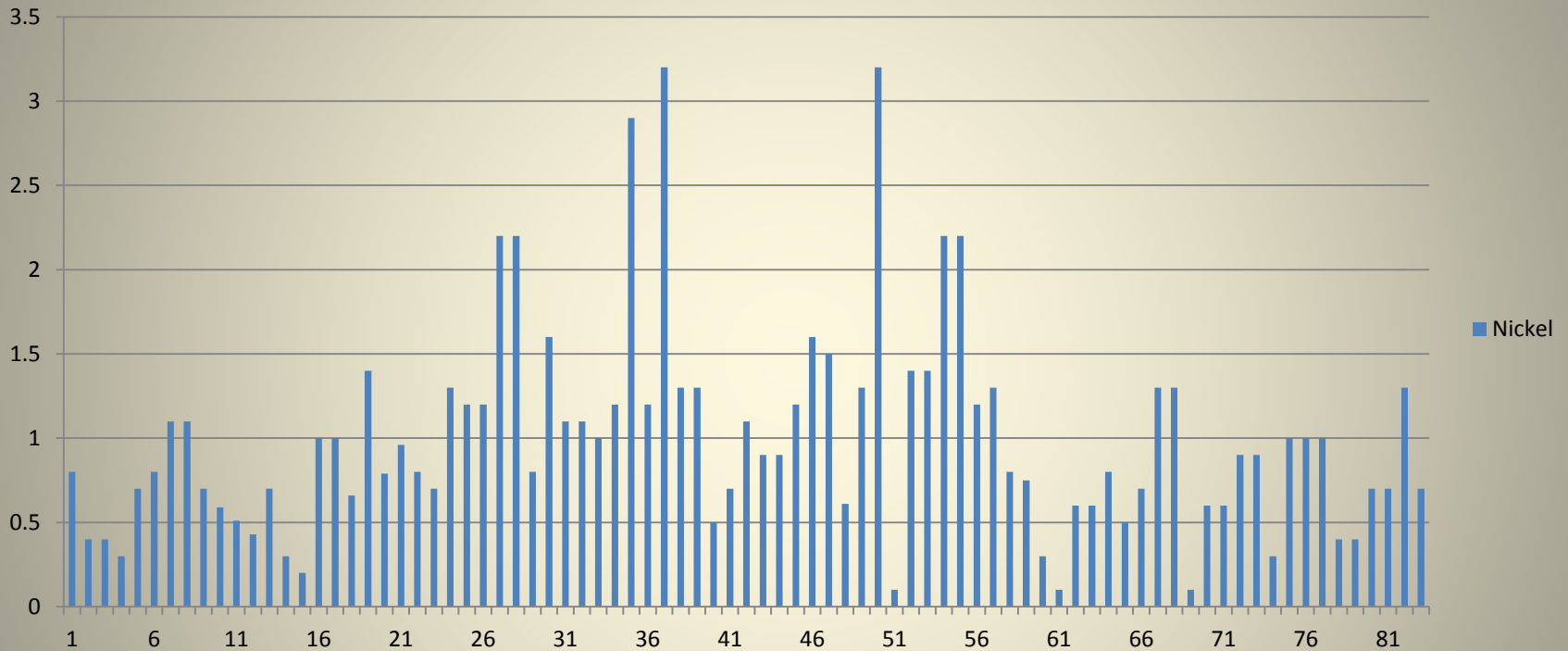


- API Gravity 40.8° API to 46.7° API
 - API Gravity Average = 45.1° API



Waterborne Eagle Ford

Nickel

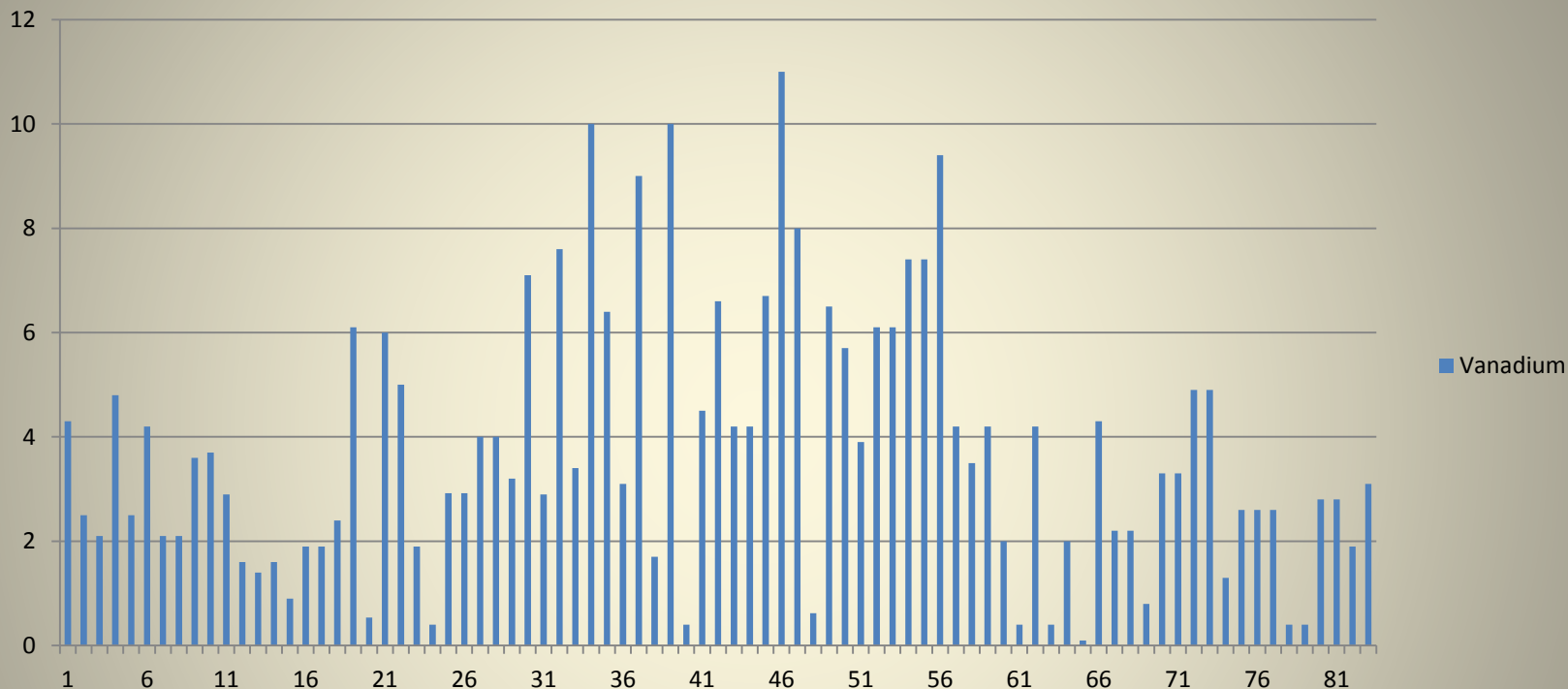


- Nickel 0.1 ppm to 3.2 ppm
- Nickel Average = 1.0



Waterborne Eagle Ford

Vanadium

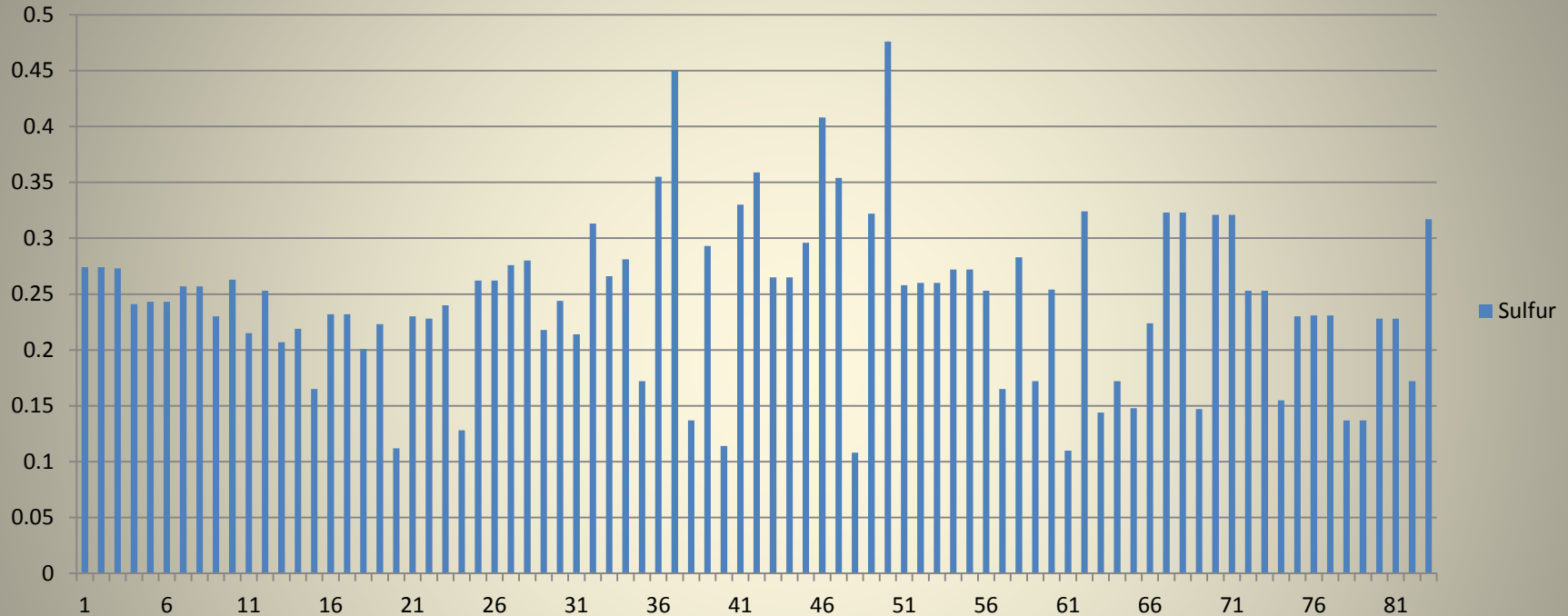


- Vanadium 0.1 ppm to 11.0 ppm
– Vanadium Average = 3.2



Waterborne Eagle Ford

Sulfur



- Sulfur 0.11 Wt% to 0.48 Wt %
 - D-4249
 - Average = 0.25%



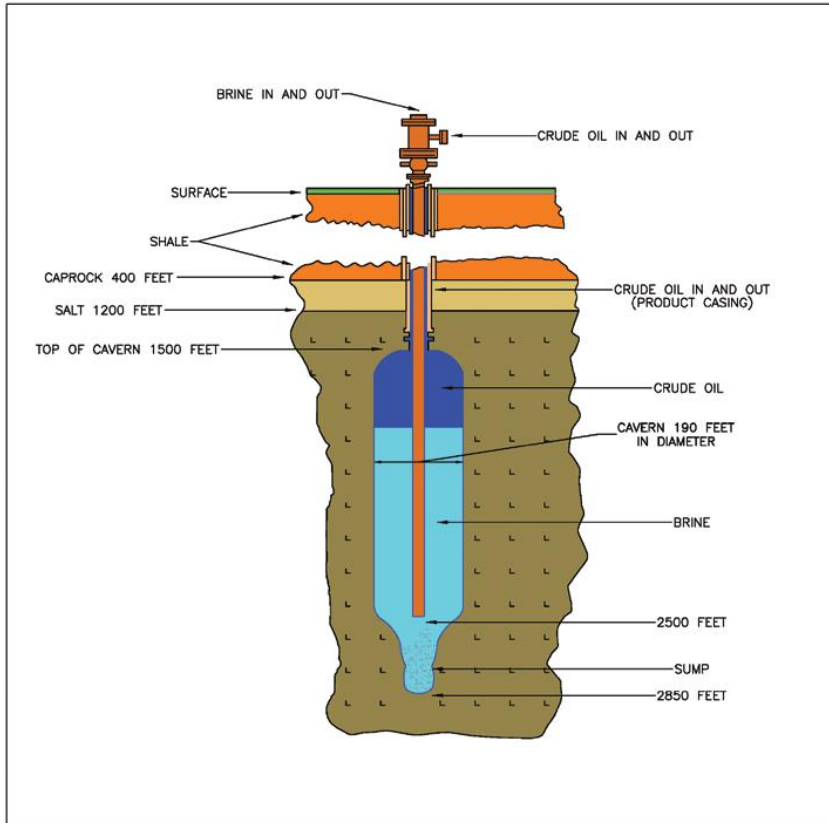
CAVERN ASSIGNMENTS



<u>Cavern</u>	<u>Capacity</u>	<u>Seg No.</u>	<u>Crude Types</u>
03	7312 Mbbls	17	ABM, BAS, KUW
04		14	MRB, Mars Blend
07		14	MRB Mars Blend
08	7621 Mbbls	20	Waterborne EAG, BNL, FOR, QUA
10	7860 Mbbls	05	ABL
11	7946 Mbbls	34	POS
12	4315 Mbbls	11	MAY, WCS, CAS
15		26	THB, Thunder Horse Blend



Salt Cavern Operations





Clovelly Tank Facility



- 15 – 600,000 bbl Tanks
- 50 ft high 310 ft dia
- Switch from Caverns to Tanks and back are performed on the fly.
- 2 injection lines in and 2 delivery line out.



QUESTIONS?