



BP Amoco

An Overview of the
Organization and Its Crude
Quality Initiatives



Corporate Enterprises

- E & P
- Power, Solar, LNG
- Refining
- Chemicals
- Shipping
- Marketing



Net Income

>1998: \$3.2 Billion

>1999: \$5.0 Billion

>2000: \$8.6 Billion (after 9 months)



E & P

- 2 MMBD crude and other liquids
- 6.3 MMMCFD natural gas
- Active in new deepwater production



Energy

- Power
- Solar
- LNG

Chemicals

- Iso and Terephthalic Acids
- Polypropylene
- Acetic Acid
- Acrylonitriles



Shipping

- Own/Operate 25,000 miles of pipeline
- 40 Ocean-Going vessels



Marketing

- 29,000 Stations in 100 countries
- 17,150 Stations in the USA
- Castrol, BP, Amoco, and Arco
- Gasoline brands are being consolidated



Refining

- ~18 Refineries worldwide
- Total Capacity: 3.7 MMBD
- USA Refineries: 8
- USA Capacity: 1.7 MMBD



US Refineries

<u>REFINERY</u>	<u>CAPACITY</u>	<u>SLATE</u>
Texas City	480	Mixed
Whiting	420	Mixed
Carson	268	ANS
Cherry Point	215	ANS
Toledo	160	Mixed
Yorktown	62	Sweet
Mandan	60	Sweet
Salt Lake City	56	Sweet



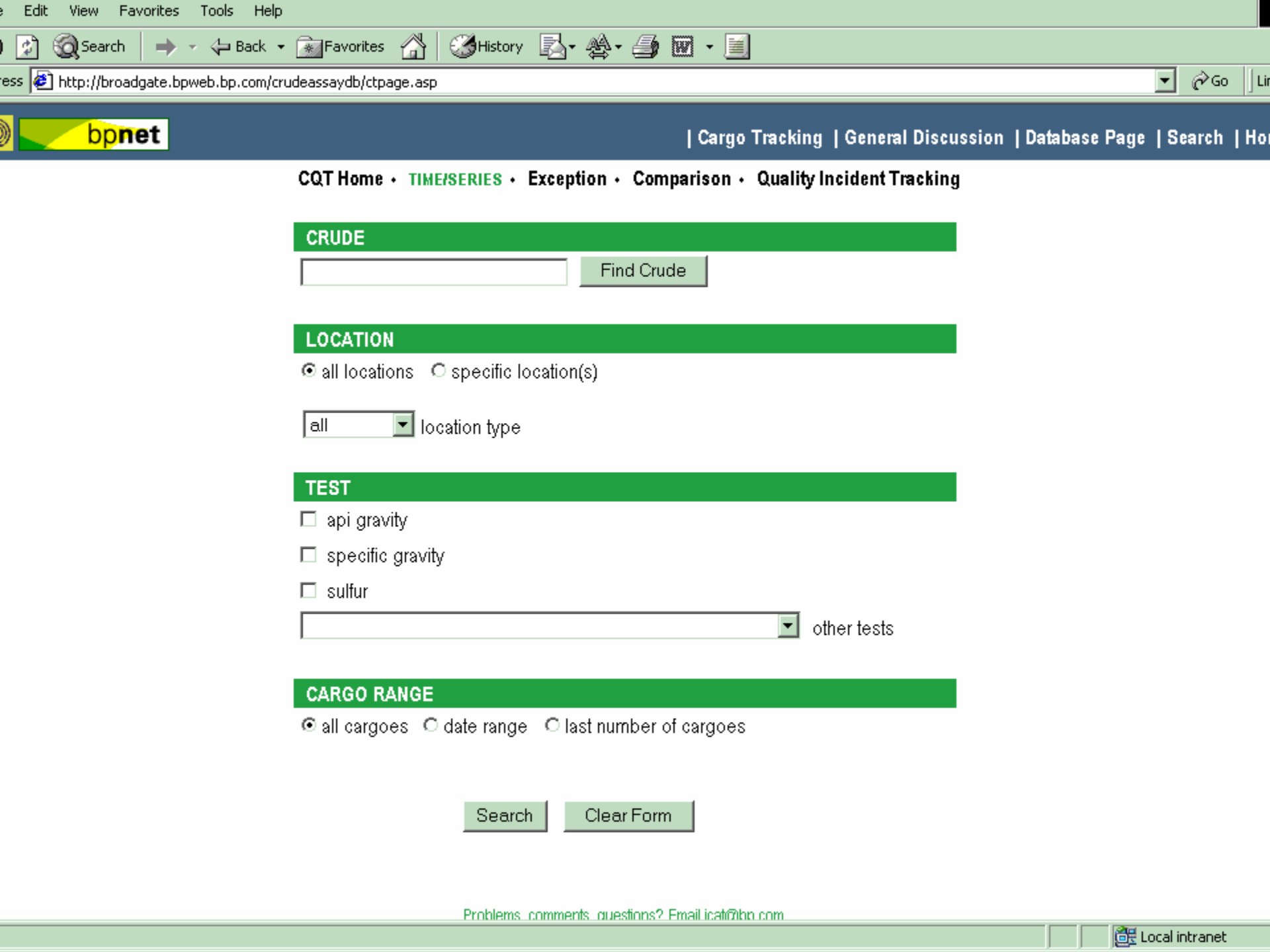
Crude Quality

- Full time positions in Pipeline and Supply
 - Protect Assets
 - Improve Crude Selection
 - Improve Crude Unit Operations
- Tools
 - Internet/Intranet
 - Automated Data Gathering



Inspector Data Entry System

- Digital Interface with Inspectors
 - Nominations
 - Inspection Reports
 - Invoicing
- Quality data can extracted and stored automatically



CQT Home • TIME/SERIES • Exception • Comparison • Quality Incident Tracking

CRUDE

Find Crude

LOCATION

all locations specific location(s)

location type

TEST

api gravity

specific gravity

sulfur

other tests

CARGO RANGE

all cargoes date range last number of cargoes

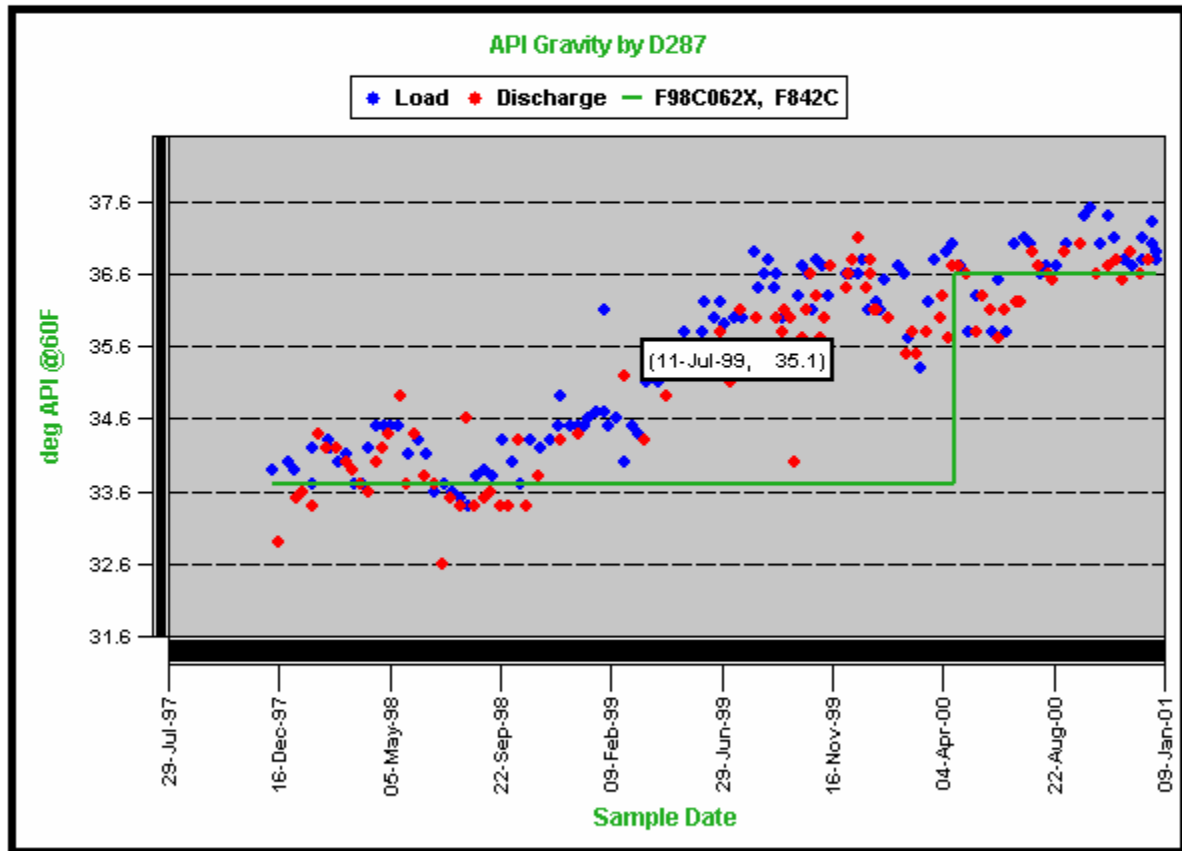
Search

Clear Form

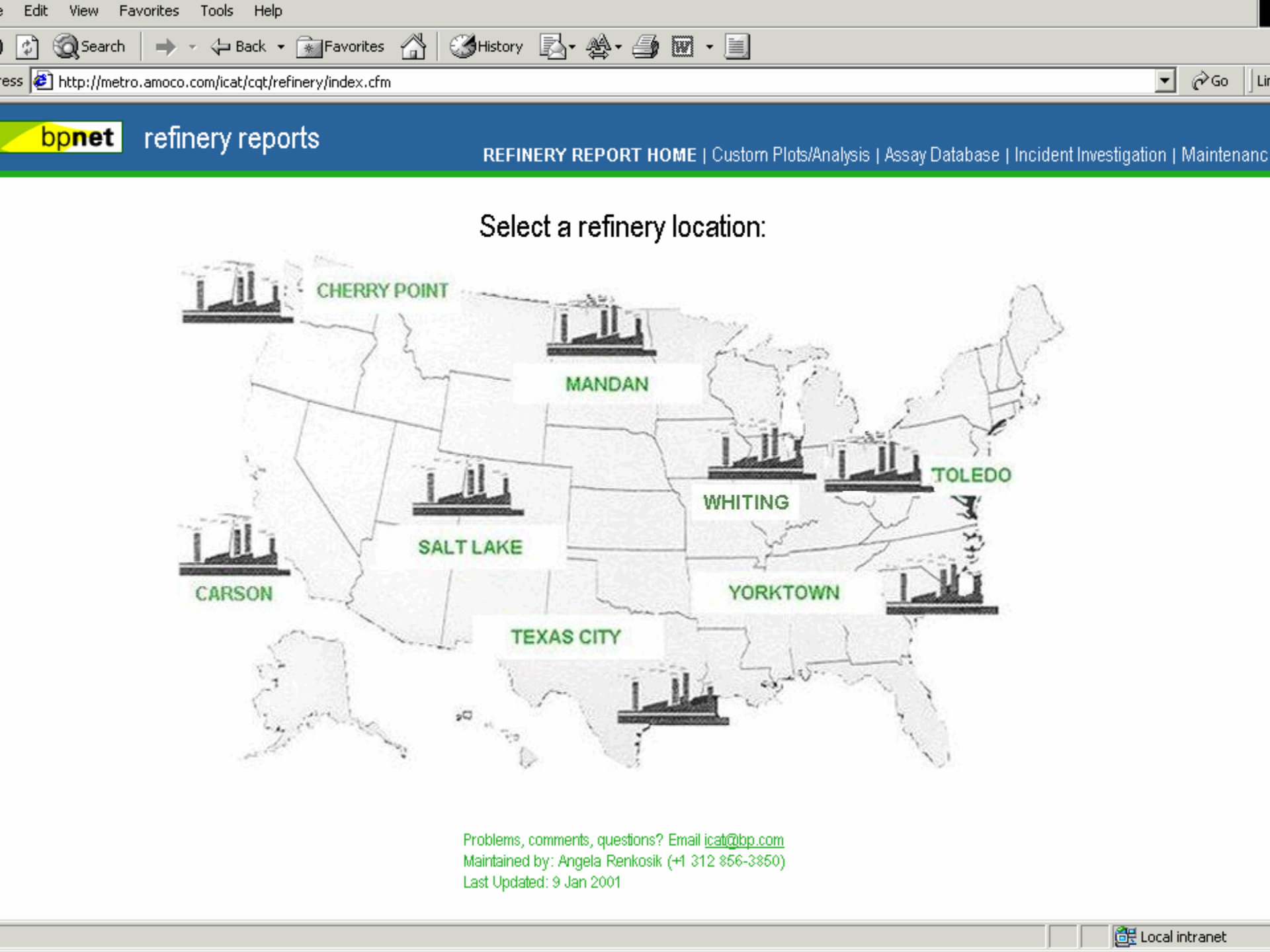
CQT Home • Time/Series • Exception • Comparison • Quality Incident Tracking

[REDACTED]

Modify Graph Scale • Change Criterion • Help



[View API Gravity Exceptions](#) [View API Gravity Tabular Results](#) [View API Gravity Statistics](#)



Select a refinery location:



Problems, comments, questions? Email icat@bp.com
Maintained by: Angela Renkosik (+1 312 856-3850)
Last Updated: 9 Jan 2001

